

AP-SH50 Smart Hub for Zigbee/Z-Wave Sensor



AP-SH50 smart hub for zigbee/zwave sensors is an IP connectivity device for zigbee/zwave sensor devices. It uses LAN interconnection feature, providing an excellent scalability by interworking with various zigbee/zwave sensor devices. AP-SH50 smart hub and AP-SH50 application software for smart phone will help to connect to various zigbee/zwave based sensors, light switches, thermostats, and other devices. And since this smart hub is compatible with zigbee/zwave base smart sensors from various manufactures, AP-SH50 smart hub can easily add new smart sensor devices in your smart sensor network like as at home, outdoor collaboration application, etc. Total Solution for Smart Sensor Device Application (Smart Home, Smart Security, etc) AddPac smart home equipment solution is to control zigbee/zwave smart home sensor devices, to control the visitor access through SIP video door phone which can be installed at the home entrance, and to monitor

the smart home IP camera video with internet connectivity. AddPac smart home equipment solution consists of smart wall pad(AP-VWP80, AP-VWP100), sip video door phones, smart hub for zigbee/zwave sensor devices, various zigbee/zwave based sensor devices, video phones for security guard, and smart pad/tab and smart phone appl, to provide an excellent scalability. AddPac AP-SH50 smart hub for zigbee/zwave smart sensor devices supports the external antenna interface for zigbee/zwave. For indoor application like as home, small & short antenna style is recommended and this short antenna is directly connected on antenna interface connector of AddPac smart hub. AddPac supports several antennas such as AP-Z-ANT0, AP-Z-ANT1, AP-Z-ANT2 for AP-SH50 according to zigbee/zwave application, location (indoor, outdoor, basement), etc. AP-Z-ANT0 has no cable and very easy to handle. This antenna is very comfortable when AP-SH50 smart hub is installed in open space and very close to window side in home or office building when smart sensor is located in window closed area. AP-Z-ANT1 antenna has 2m cable length. So this antenna is very applicable when smart hub is installed in side of home or building and smart sensors are located in outdoor area. This antenna provides reasonable performance when smart hub installation location is also close to window side in office building. But it is little bit difficult to handle and manage because this antenna also has 2m cable length. AP-Z-ANT2 gsm antenna has 20m cable length and big antenna height comparing with previous one. This antenna is special ordering item and expensive. Normally long distance cable antenna length means antenna performance degradation due to resistance characteristic. To compensate performance degradation due to cable length, we increase the antenna height and cable diameter. This antenna is very useful for underground installation when smart hub installation location is too far to window side in office building especially. AP-SH50 RISC CPU is programmable structure so that user may use the latest features without much effort by simply setting an auto upgrade option or download from the homepage. AP-SH50 is embedded with smart web manager for easy control of smart hub. User may setup/manage smart hub through PC, smart phone, and tablet device. AddPac various VoIP, Video and multimedia products are well recognized in terms of performance and stability throughout the world. With our accumulated experience in enterprise market and communication market, AP-SH50 will satisfy the needs of customer along with AddPac smart sensor application solution.

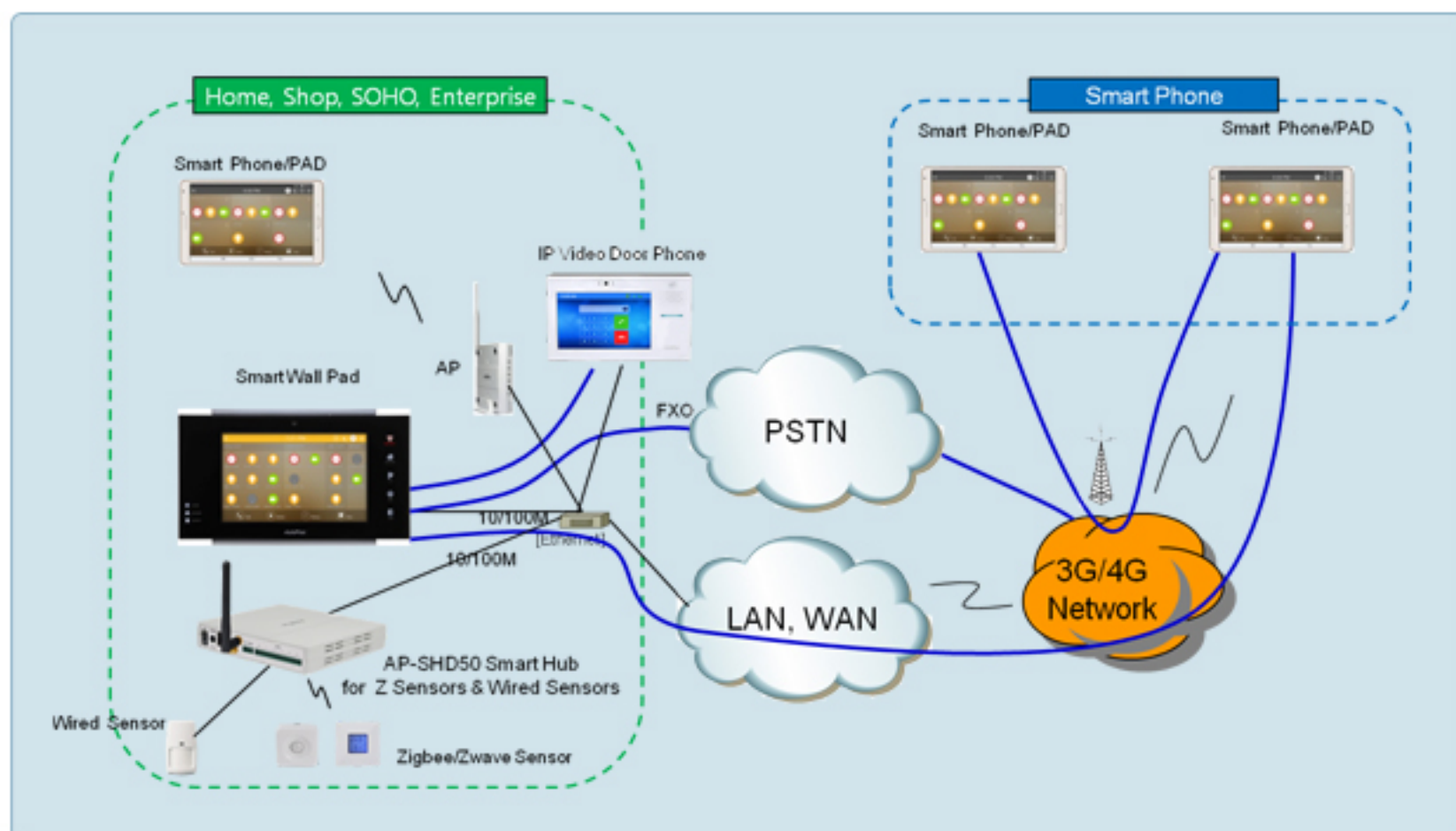
Major Feature

Overall Features

- AP-SH50 Smart Hub for Z sensors
- Advanced Smart Home Solution
- Zigbee/Zwave Dual Sensor Interface Support
- Smart IP Routing Service Features for Sensor Network
- Smart Wall Pad Interworking Service Features
- Smart Hub Interworking Support for Third Party
- High Performance RISC Programmable Architecture
- One 10/100Mbps Fast Ethernet
- High Performance LAN-to-Zigbee/Zwave Routing Capability
- Powerful Network Protocols (PPPoE, DHCP, Static Routing, etc)
- Firmware Upgradeable Architecture
- Smart Web based Management
- Light and Compact Design with External Power Supply



Network Diagram



AddPac Technology Co.,Ltd.

AddPac Texhnology (Korea-Head Office)
 Phone +8225683848
 Email sales@addpac.com